

FLOOD DEFENCE

Andel FloodWall®

Cost-effective perimeter
flood defence



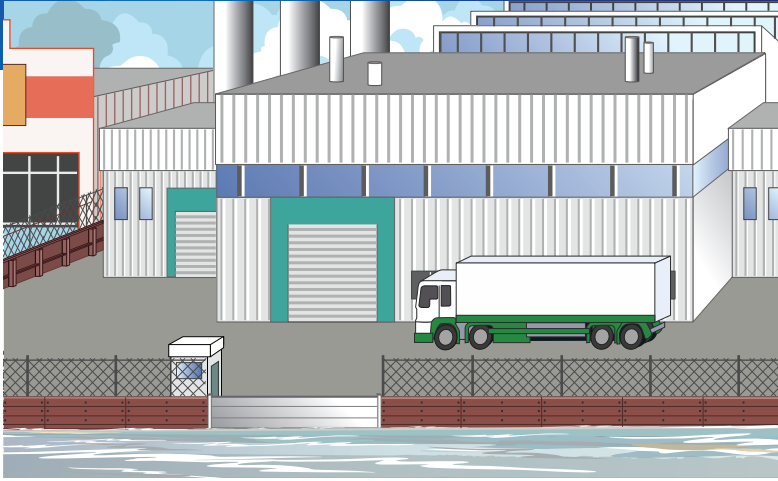
An innovative, recycled, low-cost alternative
for effective perimeter flood defence

Protecting your assets. Protecting the environment.



Andel FloodWall®

A revolutionary, cost-effective perimeter flood defence designed to prevent damage to your assets from floodwater. Andel FloodWall® is a modular design for easy transportation, easy on-site installation and is constructed from 100% recycled post-industrial plastic waste.



Andel FloodWall® is suited to commercial, residential, new build and retrofit installations.

Andel FloodWall® is the cost-effective, environmentally friendly alternative for perimeter flood defence.

- **Cost-effective compared to traditional flood defence systems.**
- **A modular system designed for easy transportation and speedy on-site assembly.**
- **Suitable for both new build and retrofit installations, both residential and commercial.**
- **Panels and posts are constructed from nonporous, durable, 100% post-industrial recycled plastic waste.**
- **Environmentally friendly, reducing your carbon footprint compared to an all-concrete construction.**
- **Aesthetically sympathetic with a wood-effect finish.**
- **Steel reinforced posts for a robust installation.**

Easy transportation and on-site assembly

Andel FloodWall® is a modular design which allows for easy transportation and can be quickly assembled on site in a similar way to conventional perimeter wood fencing.

Environmentally-friendly robust construction

The panels and posts are constructed from nonporous, durable, 100% post-industrial recycled plastic waste with steel pipe reinforcement running through each post to provide added strength and a robust installation.

The panels are fitted with horizontal ridge supports to prevent bending if under pressure from floodwater.

The panels and posts have an aesthetically sympathetic wood-effect finish to blend into any environment.

Water resilient installation

Andel FloodWall® can be installed onto soft ground or onto an existing, suitable hard surface.

The posts are set into a concrete foundation providing a robust and effective weight-bearing structure.

The panels are secured to the posts with self-tapping screws through the front of the panels, compressing the waterproof gasket, tightening securely into the posts.

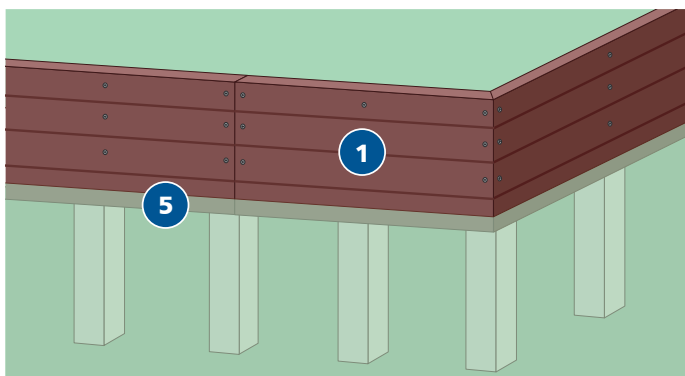
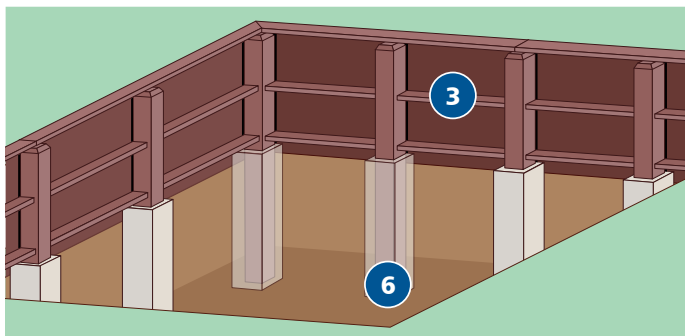
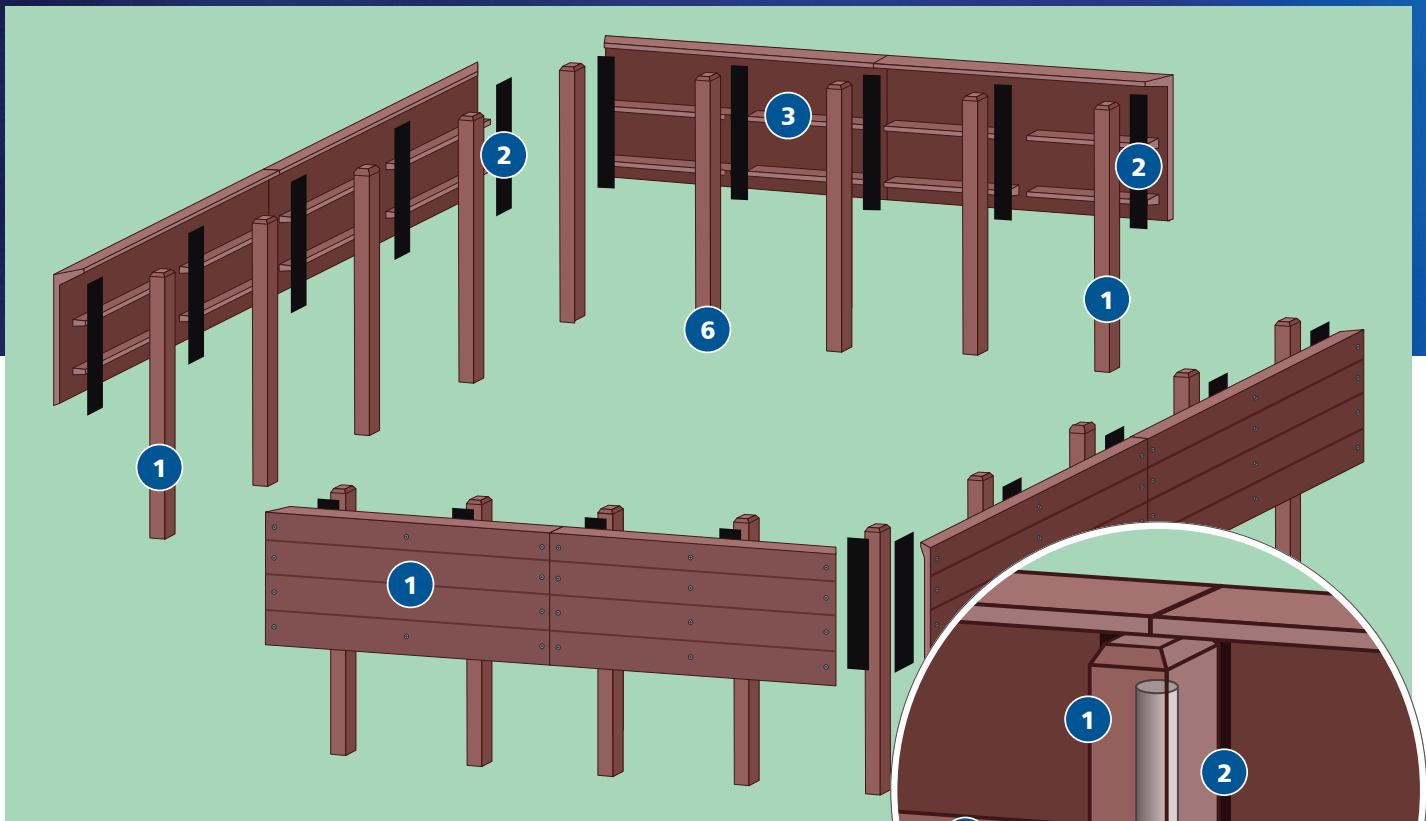
The panels are set into the ground by 100mm to create a water seal.

Built to resist the force of floodwater

In a flood event, the greatest force is exerted where the flood defence meets the ground. Special care and development has been undertaken to ensure that the Andel FloodWall® will withstand the full force of floodwater in a flood event.

Andel FloodWall® steel-pipe reinforced posts are fitted deep into the ground to the same height as the wall, into a concrete foundation, providing a level of strength that will resist the weight of floodwater in the severest of floods*.

***Andel FloodWall® has been designed and tested to meet the requirements of British Standard BS 851188-1:2019 for Flood resistance products.**



Panel size and height of defences

The height of the flood defence is calculated based on a flood risk assessment.

Two panel sizes:

| Height cm | Width cm | OR | Height cm | Width cm |
|-----------|----------|----|-----------|----------|
| 60.0 | 192.0 | | 80.0 | 192.0 |

If the defences need to exceed the maximum standard panel height, panels can be doubled up to give extra height. The added panels are sealed with a watertight gasket and additional supports are added to ensure the defence meets the correct requirements.

Andel FloodWall® modular construction and installation

- 1 Panels and posts are constructed from nonporous, durable, 100% post-industrial plastic waste with an aesthetically sympathetic wood-effect finish.
- 2 Joints between panels and posts are sealed with a compressed waterproof gasket that tightens under pressure.
- 3 Panels are fitted with horizontal ridge supports to prevent the panels from bending if under pressure from floodwater.
- 4 Steel pipes run through the length of the posts for added reinforcement.
- 5 The panels sink below ground level to create a waterproof seal.
- 6 The posts sink deep into a concrete foundation below ground level to the same depth as the height of the wall, providing the strength to resist the force of floodwater.

Andel provides consultation, design, manufacturing, installation and support services for four key specialist areas:

- LEAK DETECTION
- FUEL AND OIL STORAGE MAINTENANCE AND COMPLIANCE
- INTERCEPTOR AND DRAINAGE MAINTENANCE
- FLOOD DEFENCE

Working with some of the largest public and private organisations in the UK for over a quarter of a century:

- | | | |
|----------------------------|--------------------------|---------------------------------------|
| Telefonica | Rolls Royce | CBRE |
| Wellcome Trust | Microsoft | Engie |
| Global Switch | Google | Interserve |
| Bank of America | Facebook | ISS |
| HSBC | Equinix | Sodexo |
| Deutsche Bank | The British Museum | Addenbrookes Hospital |
| Northern Power Grid | HM The Queen | Imperial College Healthcare NHS Trust |
| SSE | The Houses of Parliament | University of Cambridge |
| Western Power Distribution | Vodafone | University of East Anglia |
| Electricity North West | EE | University of Warwick |
| Goldman Sachs | Virgin | Leicestershire Police |
| Airbus | Buyogues | Merseyside Fire & Rescue Service |

Exporting across the world:

Australia, Brazil, China, EU Countries, Hong Kong, Israel, Malaysia, New Zealand, Singapore, South Africa, The Gulf States, USA.



For more information call +44 (0)1484 845 000

Head Office: Andel Ltd, Unit 1 Dodworth Business Park
South, Upper Cliffe Road, Dodworth, Barnsley S75 3SP

help@andel.co.uk

www.andel.co.uk

Protecting your assets. Protecting the environment.

